

Head your page

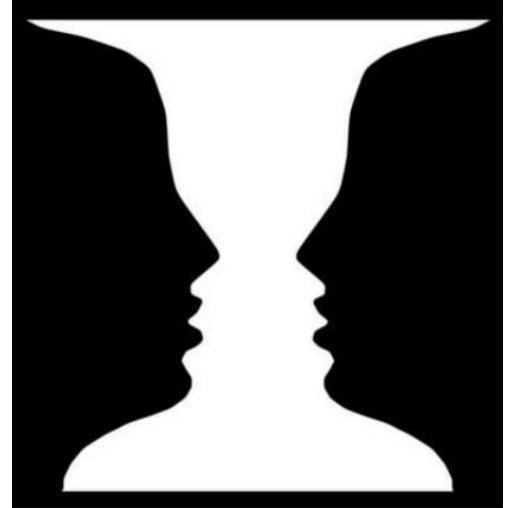
Studio Activity 3: Positive/Negative Space

Area above, below, between, within or around objects

How does an artist make the viewer see that they want them to see? Usually with a manipulation of space through shape, contrast and the creation of movement. Today we will play with the most basic version of this: creating a regular repeating pattern with a shape and its negative.

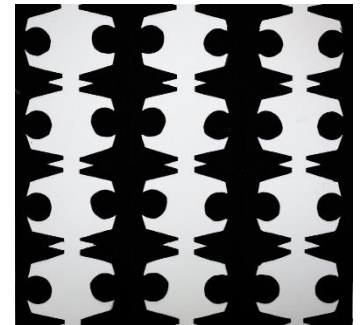
In your Sketchbook:

- 1- Draw a 2" square filled with a checkerboard pattern in two opposite colors.
- 2- Draw a 2" square filled with two shapes that create a checkerboard like pattern in two opposite colors (no lines!)
- 3- Draw a 2" square that has a shape inside it that touches two sides – leave the shape white, fill in the "extra space" with a dark color
- 4- Repeat step 3 three more times – choose the most interesting to go to step 5 with



Using the supplies at the table:

- 5- Using a note card draw the white shape smaller – so it fits into at 1 1/2" square and cut out the shape.
- 6- Trace the shape onto black paper 8 times
- 7- Arrange the black shapes on the 6 x 6" paper to form a 16 block pattern – use tiny dots of Elmer's glue to attach the black shapes to the white paper in perfect formation.
- 8- Title the work "Pos/Neg" and today's date in the upper left. Print your name in the lower right
- 9- Hang on the wall alphabetically by class.



Some inspiration for your design

More challenging



Most Challenging- no regular pattern

